

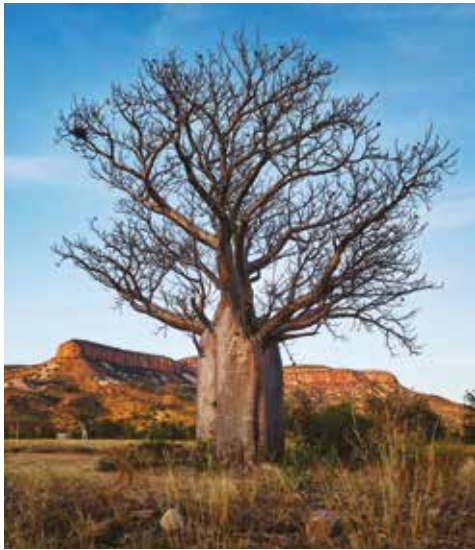
Wonders of Western Australia



**WESTERN
AUSTRALIA**
EXPERIENCE EXTRAORDINARY


Southern World
Unique Journeys
AUSTRALIA NEW ZEALAND FIJI

Wonders of Western Australia



The great state of Western Australia (WA) occupies the one third of the island continent of Australia. With oceans on three sides, Indian Ocean to the north and west, Southern Ocean and Great Australian Bight to the south, it has a land mass of approximately 2½ million square kilometres or about the size of Western Europe.

Yet the state is home to only 2.6 million people, or just above 10% of the national total. The state contains an extremely diverse range of landscapes from Australia's sunniest capital city, white beaches and largest expanses of outback, one of the world's oldest known living cultures, a UNESCO World Heritage reef and rock formations, world-class surfing, fresh cuisine, premium wines, and some of the friendliest people.

Perth, the state capital, effortlessly blends urban cool with raw natural beauty and makes the perfect base for your unique Western Australian experience. Bustling with new boutique bars, cafes and restaurants, shopping and cultural options, Perth is also home to Kings Park, one of the world's largest inner city botanical gardens, modern infrastructure and facilities, and some of the finest hotels in the region. There's nothing quite as magnificent as sunset over the Indian Ocean after a day or two exploring Perth and surrounds. Take a leisurely cruise down the Swan River to Fremantle, the port city, with its maritime, convict and colonial history. Jump on a short ferry ride to Rottnest Island, and meet Australia's most photogenic marsupial, the world famous quokka, now the name of a new Qantas Dreamliner aircraft.

The Margaret River wine region, four hours easy driving from Perth, is a place to indulge many passions. While the region produces only 1% of Australia's wine, over 15% of the premium vintages come from this area. The combination of these fine wines and the magnificent fresh produce has created a plethora of outstanding restaurants, cafes, boutique breweries and food outlets that attracts world renowned chefs and many foodies from all over the world for the annual Margaret River Gourmet Escape featuring the amazing food and wine along with the many of the world's best big-wave surfing locations, ancient limestone caves, nature trails and wellness retreats.

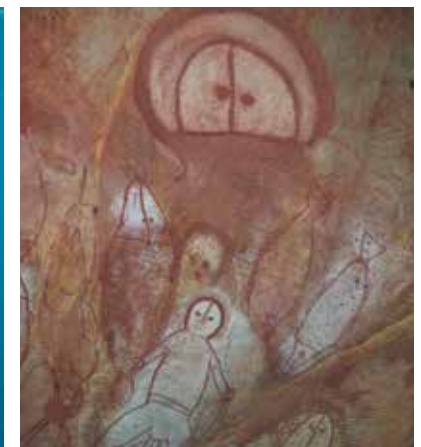
WA's Southwest is one of the world's 36 biodiversity hotspots. Climb over ancient rocks of the Granite Skywalk uncovering rare plant species found nowhere else on earth. Be surrounded by the tall timbers or view your surrounds forty metres high on a forest canopy at the Valley of the Giants Treetop walk. Albany's rugged coastline is a fitting backdrop to its dramatic history. The first European settlers arrived here and the first ANZACs departed Australian soil bound for World War 1, many never to return. Learn about almost two centuries of convict and settler history on Albany's heritage trails and museums. Albany was one of the last whaling stations and the historic whaling station at Discovery Bay, the only museum of its kind in the world to be housed in a formerly fully-operational whaling station, should not be missed.

You can also go north from Perth, where about halfway along nearly 12,900km of coastline, you arrive at the world heritage listed Ningaloo Reef, 300km long and the largest fringing reef in the world.



Swim with the giant whale sharks from March to July and Humpback whales from August to October. Crystal clear turquoise waters are a few steps off the beach where you can snorkel in pristine coral gardens with an amazing array of marine life sea turtles, manta rays and dugongs.

Broome and the vast Northwest is further still, a land of breathtaking contrasts covering millions of years history within an area of over one million square kilometres. Find adventure in ancient gorges of the Karijini National Park, witness the illusion of the Staircase to the Moon from Cable Beach in Broome, take flight over the intriguing Bungle Bungle Range, or take an expeditionary cruise along the coast and see the horizontal falls and Gwion Gwion, indigenous rock paintings believed to have been created over 60,000 years ago.



Western Australia is a land of contrast where there is always “Just Another Day...”

Southern World Australia has created this unique 9 day self-drive exploration of Western Australia’s Southwest that may be modified to include other places of interest, including Kalgoorlie and the Goldfields, pristine white beaches of Esperance or historic settlor towns like Toodyay and York.

Start with two nights in **Perth**, a scenic and sophisticated city, renowned for its abundant sunshine, relaxed lifestyle and easy-going manner. The city’s modern skyline blends with magnificent colonial architecture, housing excellent retail outlets. King Street, a historic and lovingly restored commercial precinct, is known for its fashion houses, cafes, art galleries and specialist book stores.

The city’s prime position, flanking the Swan River, provides an excellent setting for enjoying alfresco dining in one of the many outdoor restaurants and cafes, not to mention over 80km of white sandy beaches within easy reach. Two nights at Como The Treasury or Holiday Inn Perth City.

Originally a surfing enclave, **Margaret River** has evolved into a smorgasbord of fine wine, great cuisine and spectacular scenery, an easy four hour drive south from Perth. Any trip to Western Australia is incomplete without a few days in Margaret River. A wide selection of world award winning wineries, boutique breweries, restaurants and cafes overlooking sweeping vineyards and surf breaks are waiting to tempt you. This region produces over 15 per cent of the country’s premium wine and there are more than sixty plus wineries to choose from and some of Australia’s best chefs now call Margaret River home and create unique tastes using the fresh produce from the region, including exquisite cheeses, jams,



condiments, oils, western rock lobster, as well as local farmed meats and seafood. Three nights at Cape Lodge or Margaret’s Beach Resort.

An overnight stop at **Pemberton**, to allow you to spend time in the ancient Karri forests, take a walk along a treetop canopy or even climb the majestic Gloucester Tree. One night at Karri Valley Resort.

Albany marks the spot where the first European settlers arrived in Western Australia and much of their legacy remains today with over fifty colonial buildings standing proudly as museums, galleries and restaurants in the town. From convict prisons, whaling ships and taverns to quaint cottages and grand National Trust residences, you can take in almost two centuries of history on a thirty minute self-guided walk, following the Amity Trail. Albany’s King George Sound also marks the spot where the first convoy of ANZACs departed for the battlegrounds of World War I and you can follow their extraordinary experiences through the National Anzac Centre’s state-of-the-art interactive displays. Two nights at Beach House at Bayside.



Our Southwest Sojourn includes :

- + Private vehicle & driver arrival transfer from Perth Airport to your Perth hotel
- + Two nights at Como The Treasury or Holiday Inn Perth City including breakfast
- + Three nights at Cape Lodge or Margaret’s Beach Resort including breakfast
- + One night at Karri Valley Resort (room only)
- + Two nights at Beach House at Bayside including breakfast
- + 7 Days Avis Rental Car (Full Size – FCAR) with pickup Perth Downtown and return Albany Airport Includes Unlimited Kilometres, Loss Damage Waiver for vehicle and Third Party Property (excess reduced to zero), 24 hour Roadside Assistance, Vehicle Registration Recovery Fee (VRR), Administration Recovery Fee (AR), Government Stamp Duty, 10% GST. *Note: Location Fee is included in the daily rental rate only and not for any extras such as child seats, GPS Units or one way fees.*
- + Full Day Margaret River Wine & Dine Tour including pick up & drop off, lunch and wine tastings (small group tour)
- + GST (Goods and Service Tax) on provided services, Self-Drive Travel Wallet & Exclusive Southern World Gift Pack

The Kimberley

There's a deep, intangible presence that's both powerful yet calming. It emanates from the rocky landscapes more than two billion years old and among the oldest on earth.

The mottled cliff faces, regal mesas and twisted formations glower with rusty red hues, contrasting dramatically against the turquoise blue ocean. In remote coves and hidden rivers, the water turns white with the rush of cascades. Horizontal Falls is a gravity defying oddity, churning between twin mountain ranges, powered by immense tides that rise and fall by up to 15m repeatedly throughout the day.

King George Falls provide another perspective on Mother Nature's extremes, thundering down 80m to wet you to the skin. Aboriginal rock art dated up to 60,000 years old paints the interiors with sacred figures found in every part of the Kimberley, from the islands to the gorge-pocked outback.



Southern World

Unique Journeys

AUSTRALIA NEW ZEALAND FIJI

Level 5, 55 York Street
Sydney NSW 2000
AUSTRALIA

T +61 2 8235 3600

resaust@southernworld.com

Valerie May
Sales Manager

UK & Europe

T +44 7796 141319

vmay@southernworld.com

Peter Askin
Director of Sales

USA & Canada

T +1 630 752 4474

paskin@southernworld.com

Southern World Australia is a Kimberley Cruising specialist offering the following selection of itineraries:



11 DAY SOUTHERN QUEST ITINERARY ON KIMBERLEY QUEST II

Cruising from Broome to Hunter River visiting and viewing Cape Leveque, Buccaneer Archipelago, Dugong Bay, Talbot Bay, the incredible Horizontal Falls, Montgomery Reef, Raft Point, preserved Wandjina art, the 'Petrified Warriors' at sandstone pillars at Langii, King Cascade Waterfalls and Cathedral Falls, Prince Regent River. A total of three nights are included in Broome to experience this diverse town. Cruise includes hotel pick up and drop off, all meals, daily excursions, a helicopter flight over the Mitchell Falls, a light aircraft transfer from Hunter River to Broome (note subject to dates of departure the cruise operates in reverse direction).

Departures: 2nd June to 18th August, 2019

Kimberley Quest II: 18 passengers



13 DAY KIMBERLEY ITINERARY ON CORAL EXPEDITIONS CRUISES

Cruising from Broome to Darwin visiting and viewing classic Kimberley icons including the Buccaneer Archipelago, Talbot Bay, Horizontal Falls, Kuri Bay and pearling, Wandjina art and mysterious Bradshaw paintings (Gwion), Montgomery Reef, Careening Bay, Mitchell Falls, Vansittart Bay and the US Air Force DC3, King George River and Falls. Two nights are spent in Broome pre-cruise to enjoy this town with an amazing pearling history. Cruise includes Captain's Welcome and Farewell Drinks, all meals, morning and afternoon teas, house wine and beer served with lunch and dinner meal service, services of expedition staff including lectures, briefings, slide/film presentations, and other group activities, group transfers during the cruise, 24 hour tea and coffee station and landing fees

Departures: 1st and 22nd June, 13th July, 3rd and 24th August, 14th September, 2019

Coral Adventurer: 120 passengers



17 DAY KIMBERLEY SNAPSHOT ITINERARY ON TRUE NORTH CRUISES

Cruising from Broome to Kununurra visiting and viewing the must see and do's of the Kimberley including Horizontal Falls, Doubtful Bay, Montgomery Reef, Prince Regent River, Kings Cascades, Hunter River, Jackson Falls, Naturaliste Island, King George River and Falls, Tranquil Bay, Wyndham. Start this itinerary with Perth and Margaret River with total of 4 nights in Perth, touring to the Pinnacles, self-drive to Margaret River for 2 nights, 2 nights pre-cruise in Broome. Cruise includes hotel pick up and drop off, all Australian cuisine dining and non-alcoholic beverages, all activities as outlined in itinerary, park permits and port charges.

Departures: 27th April, 18th May, 8th and 29th June, 20 July, 10th August, 2019

True North: 36 passengers