

THE GEORGE HOTEL

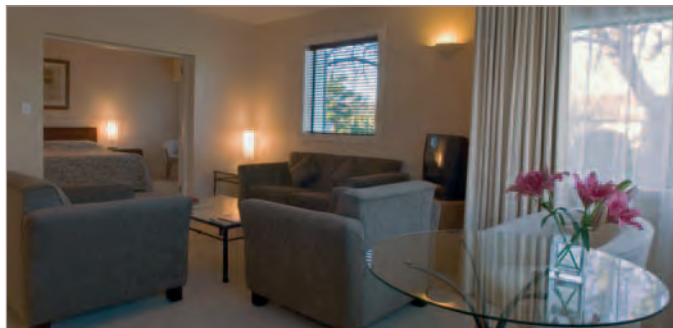
The George is New Zealand's most captivating small luxury hotel, set in the heart of Christchurch, with panoramic views of Hagley Park and the Avon River. At its essence is chic style and supreme comfort.

Impeccable service is assured with a one-to-one ratio of staff to guests. Each of the 53 spacious rooms is designed with a stylish eye for detail. Contemporary elegance is a feature of the public areas with Ralph Hotere art works and Stephen Gleeson sculptures covering walls and filling corners of The George's sleek entrance lobby.

The George has earned a longstanding reputation for its superb food and wine. The hotel's two award-winning restaurants, Pescatore and 50 on Park are renowned for creating some of New Zealand's most innovative and exciting food, matched with superb local and international wines.

Leisure options at The George range from an all-weather astro turf tennis court, to cycling, walking and golf in adjacent Hagley Park. The hotel is just steps from Christchurch's city centre and the Cultural Precinct including the heritage tram route, Canterbury Museum and Botanic Gardens, Arts Centre and the contemporary Christchurch Art Gallery.

The George is a member of Small Luxury Hotels of the World.



SUGGESTED ITINERARY INCLUDING THE GEORGE HOTEL:

- Pre registration recommended for early arrivals
- 2 nights at The George Hotel in an Executive Room complete with luxury amenities
- Luxury dining at Pescatore Restaurant or 50 on Park Restaurant and Bar
- Akaroa Harbour Nature Cruise (page 41). Cruise around the extinct volcanic crater of Akaroa Harbour and see dolphins, seals and penguins

